

The Roecliffe Ramble

This gentle, circular walk takes you from the picturesque village of Roecliffe out along the banks of the River Ure. Passing by Westwick Lock, the walk goes on to offer excellent views across the river to Newby Hall and Gardens before returning to the village via hedge-lined paths and a farm road.

Roecliffe is a name which comes from the Old Norse rauthr and klif, meaning 'red cliff or bank'. The settlement's first recorded history dates back to the reign of Edward I in the 13th century.

Walk Information



The full walk is five miles (8km) long and should take around two-and-a-half hours at a steady pace. Park thoughtfully in Roecliffe village. Start at the walk interpretation panel in front of St Mary's

Church. Follow the route shown by the blue waymarkers.

OS Map Explorer 299 covers the area.

Buses serve Roecliffe (www.northyorkstravel.info)



A smart narrowboat glides along Westwick Cut towards Ripon.

URE WALKS THROUGH TIME

Boroughbridge and the lower Ure Valley are steeped in history and support fascinating wildlife. Ure Walks Through Time enable the people who live here and the visitors who come here to explore and enjoy the riches that surround us. This is one of a series of waymarked walks leaflets available from local outlets.

Ure Walks Through Time is an initiative led by Yore Vision, the regeneration partnership for Boroughbridge and the Lower Ure Valley, working to improve the area for people who live, work and visit here.

For further information about Ure Walks Through Time or Yore Vision, visit the Tourist Information Point, 1 Hall Square, Boroughbridge or call 01423 323373.

www.boroughbridge.org.uk | www.yorevision.org.uk

FOLLOW THE COUNTRYSIDE CODE

Be safe, plan ahead and follow any signs.
Leave gates and property as you find them.
Protect plants and animals and take your litter home.
Keep dogs under close control.
Consider other people.



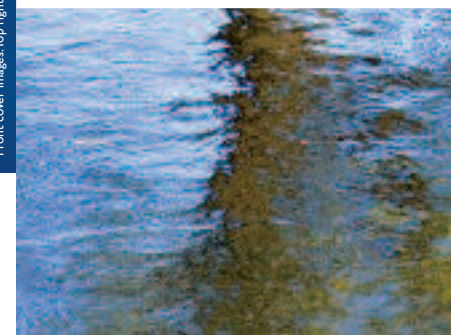
Some information has been taken from material supplied by the Boroughbridge and District Historical Society. Front cover image: Top right - The church door handle. Middle - Brown hare. Bottom right - St Mary's Church.



URE WALKS THROUGH TIME



The Roecliffe Ramble



URE WALKS THROUGH TIME

Keep an eye open for grey herons.

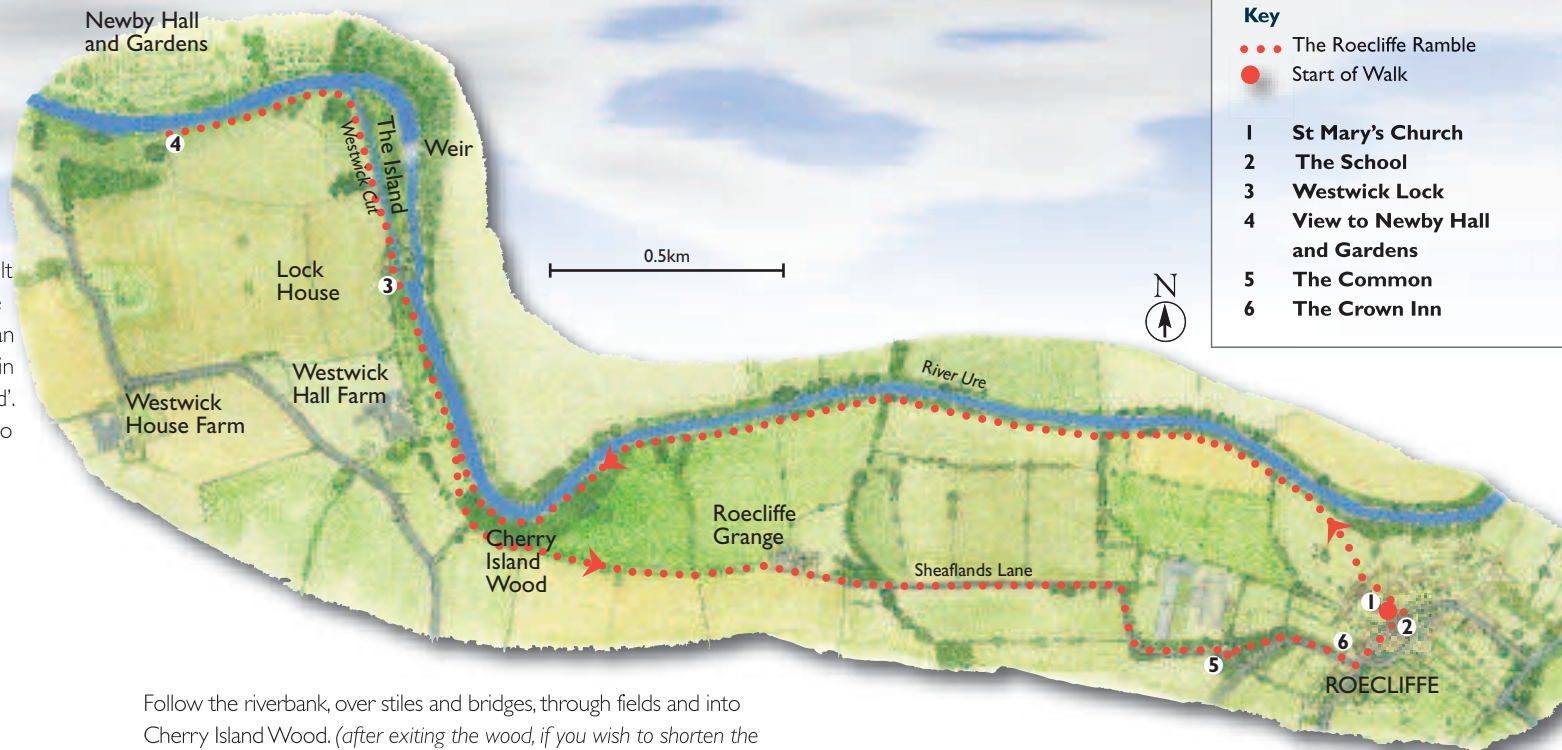
The Route

The church of St Mary's was built in 1844. It is believed to be the only one in the country with an entirely vaulted roof, which is in a shape known as 'wagon-head'. Its marble floor and the steps to the chancel were originally part of the pavement in front of the high altar at York Minster.

Follow the footpath to the right of the church, signposted 'Public footpath to Westwick Lock' and, following the blue waymarkers, turn right in a farmyard through a five-barred gate and make your way down to the banks of the Ure.

Wildlife abounds around this stretch of gently-flowing river.

At different seasons of the year roe deer, barn owl, tree sparrow and finch flocks can be seen over the farmland. Buzzards are also evident in winter and spring. Waterfowl abound, especially geese on autumn stubble.



Key

- The Roecliffe Ramble
- Start of Walk

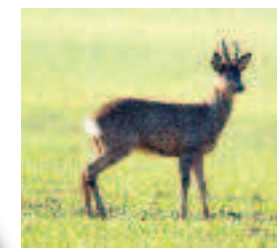
- 1 St Mary's Church
- 2 The School
- 3 Westwick Lock
- 4 View to Newby Hall and Gardens
- 5 The Common
- 6 The Crown Inn

Follow the riverbank, over stiles and bridges, through fields and into Cherry Island Wood. (after exiting the wood, if you wish to shorten the walk, turn left uphill as per final paragraph and return to Roeclyffe)

Continue along the bank to Westwick Lock. You might pause to watch canal boats heading to or from Ripon Canal. Large information panels here tell you about the history of the river.

Follow the path to just beyond a stand of trees, where you'll be met with an uninterrupted view of Newby Hall across the river. This fine Adam house was built in the 1690s, and you'll also catch a glimpse of its 25 acre gardens.

The waters here may look tranquil, but in 1869, two gardeners from the Hall and four members of the York and Ainsty Foxhounds were drowned. The hunt was using the ferry here, which was



Roe deer.

manned by the gardeners, to follow a fox when the overloaded craft capsized.

Now retrace your steps along the riverbank until, just this side of Cherry Island Wood, you branch right uphill past the blue waymarker to a metal gate. Walk along Sheaflands Lane passing

Roeclyffe Grange and on to the common. Pass to the right of a small pond, then through woodland, until you come back to the village by road. You'll pass The Crown which stands where inns have stood since the 14th century - and you may feel that you've earned yourself a drink and a bite to eat as you finish The Roecliffe Ramble.



The huge key to St Mary's Church door.

Looking across the Ure to Newby Hall and Gardens.